



MILLENNIUM
CHALLENGE CORPORATION
UNITED STATES OF AMERICA



December 2024

MCA MALAWI II IN 2024

FOSTERING ECONOMIC GROWTH,
REDUCING POVERTY



Table of Contents

Our Transport and Land Story	PAGE 3
From the CEO's Desk	PAGE 4
Our Core Values	PAGE 4
Key Milestones in 2024	PAGE 6
Looking Ahead 2025	PAGE 9
News Updates	PAGE 11
Partners in Focus	PAGE 13
Stories in Brief	PAGE 14
Pictorial Highlights	PAGE 16
Staff in focus	PAGE 20
Contact us	PAGE 21

A woman in the foreground is wearing a yellow patterned headscarf and a white long-sleeved shirt, focused on working with a young plant. In the background, another woman in a blue headscarf is visible, and a person is seen from behind, possibly working on a structure. The scene is outdoors with trees and a building in the distance.

IN THIS ISSUE

Hear from those whose lives will be transformed by the Transport and Land Compact's interventions.

Discover how our partnerships are driving progress toward the Compact's goals.

Key moments that made our past events memorable.

Stay updated on the latest developments for the Transport and Land Compact.

OUR TRANSPORT & LAND STORY

Underproductive land and inefficient land administration limit quality investments.

Low land-based tax collection reduces public revenue, hindering the government and city councils from funding essential services and infrastructure for the people.

Roads are the main transport mode in Malawi, connecting farmers to markets, children to schools, mothers to hospitals, and tourists to our country's beauty.

Yet, many rural roads remain in poor condition and are vulnerable to climate impacts. This lack of infrastructure hampers communities, farmers, and the growth of Malawi's economy.

In 2018, Malawi was selected by the Millennium Challenge Corporation (MCC) to develop a second compact.

MCA Malawi II is a \$350 million investment focused on improving road infrastructure, safety, and land management services. It aims to lower transport costs for smallholder farmers, modernize urban land systems, and benefit over 5 million people across the country.



\$350 million investment support from MCC



Timeline:
6 MAY 2024 - 6 MAY 2029



Over 5 million people in Malawi to benefit



Over 280 kilometers of roads to be upgraded



3 regions targeted for road upgrades



4 Cities to modernize revenue systems for improved services



Lasting impact and improved livelihoods

Objectives



Improve land administration



Reduce transport costs for smallholder farmers



Improve productive use of land



Encourage private sector investment



Improve road conditions and safety

FROM THE CEO'S DESK

Dear Partners and Friends,

Welcome to the first edition of MCA Malawi II's Annual Recap, where we proudly showcase the milestones and achievements that have defined 2024.

This publication is one of the many platforms we are using to ensure you remain informed about the progress and impact of our work under the Transport and Land Compact.

Since the Compact's Entry Into Force on May 6th, 2024, we have made significant progress together, thanks to the unwavering support from MCC, the dedication of our partners and communities alike.

We launched the first procurement packages for road corridors and other key technical and operational requirements that are key to the Compact's success.

We finalized our key policy frameworks, including environmental, social, and resettlement guidelines.

Recruitments, trainings, and the establishment of legal frameworks, such as the signing of Implementing Entity Agreements with our implementing partners; are among the accomplishments that demonstrate our commitment to delivering results.

As we look back on this remarkable year, we take pride in these achievements and the collective effort driving them.

Our mission remains strong! To serve the people of Malawi by improving land services, reducing transportation for smallholder farmers, and enhancing road quality and safety.

This is no small task, but our team is ready to meet the challenge.

I therefore encourage you to read on and discover how our efforts are advancing our shared vision to promote sustainable development, reduce poverty, and spur economic growth.

Thank you for joining us on this journey, and we look forward to continuing to share our progress with you.

Dye Mawindo



CORE VALUES & PRINCIPLES

Collaboration

Partnering with communities for tailored, impactful solutions.



Environment Standards

Protecting Malawi's environment and promoting stewardship.



Innovative Solutions

Focusing on innovation and sustainable, data driven strategies.



Engagement & Social Inclusion

Ensuring full participation and diverse voices in solutions.



Transparency & Accountability

Committed to accountability and efficient resource use.



Zero Tolerance to Sexual Harassment

Ensuring a safe, respectful environment for all.



KEY MILESTONES IN 2024



Modernization efforts in land management are advancing with recruitment of key technical consultants.



Approval of Resettlement Policy Framework to ensure fair relocations of Persons affected by the Project's works.



Environmental and Social Standards integrated across all projects for inclusivity and risk management.



Signed implementation agreements with partners for clear roles in Transport and Land Compacts.

"This road may be tough today, but soon it will pave the way for smoother and safer journeys."



Launched first procurement package for road construction valued at \$80 million.



Conducted transparent pre-bid meetings and site visits to align contractors with project goals.



Held safety training workshops for key staff and government officials with to enhance road safety skills.



City Councils announced Key Policy Statements to inform residents and support compliance.

The Chikwawa-Euthini Corridor in Rumphu and Mzimba districts is one of the many rural roads that face challenges during the rainy season, restricting access to economic opportunities and essential services for local communities and farmers.

KEY MILESTONES IN 2024



Integrity and Transparency
Anti-corruption training for all MCA Malawi II staff.



Broad Procurement Outreach Campaign to encourage diverse participation in construction projects.



Established Progress
Tracking Dashboard for Real-time monitoring of key indicators for goal tracking.



Operations & Project Management established systems for smooth activity flow.



Recruitments of new technical experts to advance Compact activities.



Addressing Grievances and Resettlement concerns for communities affected by road construction.



Stakeholder Engagement on Disclosure to keep district and community stakeholders informed.



Conducted Public Outreach and Media engagements to raise awareness about the Compact.



Data Collection and economic analysis updated using data from major cities for informed decisions.

A STROLL THROUGH CHERISHED MEMORIES



Earlier this year, we had the privilege of welcoming the MCC CEO for a meaningful and symbolic launch of the Compact.

Reflecting on this moment, we are filled with excitement and anticipation for the impactful road construction and land management improvements we have planned ahead.

2024 KEY MILESTONES



WOMEN LEADERSHIP

Workforce composition, with women in leadership roles across several key sections, leading as directors and managers.

WOMEN IN MALE DOMINATED SECTORS

Promoting women's inclusion in traditionally male-dominated fields, with women in areas like engineering, driving, GIS, economics, etc.



RECRUITMENT SUCCESS

All recruitments planned for 2024 have been successfully completed, with a 100% success rate.

GENDER RATIO

Women comprising of over 40% of MCA Malawi II staff.



PROMOTING WOMEN'S SAFETY

For Susan Khobidi, a young and driven tailor from Chigwirizano Market, the future holds promise.

Her small shop, nestled in the market where the new Chileka road will soon pass, is more than just a business. It is a lifeline for her family and a symbol of independence.

With the planned road construction, Susan has big dreams and one of the most welcome changes is streetlights.

Once installed, these lights will let her keep her shop open longer, inviting more customers and giving her the freedom to work safely into the evening.

For women like Susan, this is more than convenience. It is security.

LOOKING AHEAD 2025



The year 2025 promises to be a pivotal year filled with milestones and impactful activities as outlined in our implementation plans.

Together, these efforts bring us closer to realizing our vision of improved transport infrastructure, safer roads, and improved land services, directly benefiting millions across Malawi.

Contractors' mobilization

Awarding and mobilizing contractors for road construction across key corridors, including in-kind projects.

Launch of MRIG project

Introducing the Market Regulation for Inclusive Growth (MRIG) initiative to tackle Gender-Based Violence and Harassment in transport and market services within seven districts.

Stakeholder Engagement

Hosting workshops, media engagements, town halls, and other events to ensure the public, including local communities, are informed and involved in our projects.

City Council Digitization

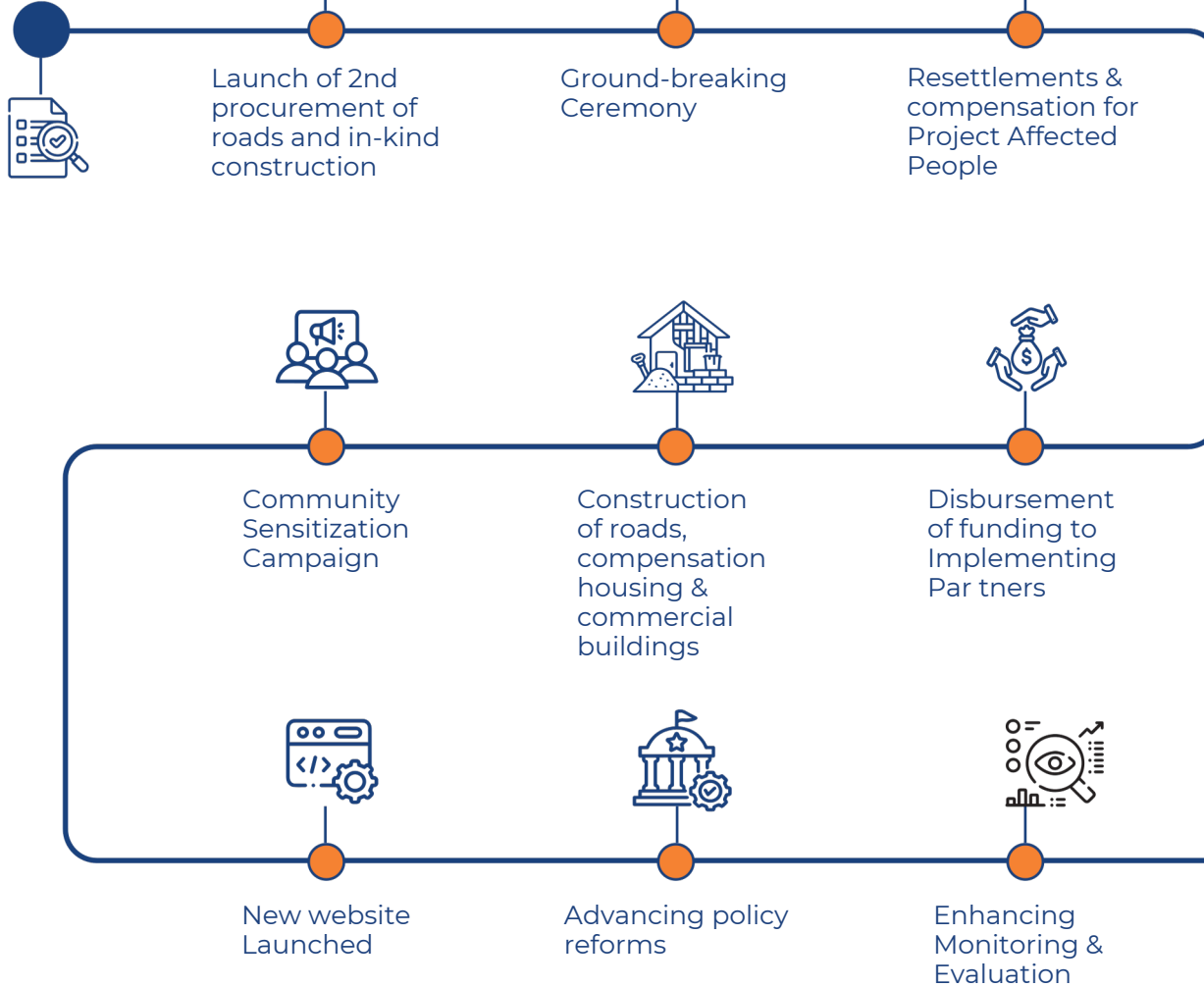
Transforming paper based property and tax records for the four cities into digital systems to improve efficiency in service delivery.

Land-Based Revenue Reforms

Building infrastructure and implementing reforms to boost city revenue for enhanced public services like sanitation, road repairs, firefighting, and more.

LOOKING AHEAD 2025

Audits and ramping up procurement efforts



BUILDING A STRONGER CITY TOGETHER

MCC officials, including Resident Country Director Joel Wiegert and MCA Malawi II CEO Dye Mawindo, met with Lilongwe Mayor Esther Sagawa to strengthen partnerships.

Mayor Sagawa shared her enthusiasm for the Compact's initiatives.

Lilongwe is one of the cities selected to modernize revenue systems that will help improve service delivery for residents.

NEWS UPDATES



MAJOR ROADWORKS PROCUREMENT

AGC PROJECT LAUNCHES FIRST MAJOR ROAD CONSTRUCTION PROCUREMENT

On September 20, 2024, MCA Malawi II marked a major milestone with the launch of its first road construction procurement under the Accelerated Growth Corridors (AGC) Project.

This initial phase targets two corridors: Chileka–Likuni and Chantulo–Mkutumula, set to improve rural access and reducing transport costs for smallholder farmers.

Since May 2024, MCA Malawi II has prioritized transparency and competitiveness in its procurement processes, aiming to set new standards for integrity and accountability.

The Daily Times THURSDAY, SEPTEMBER 19, 2024 ADVERTISING | 2

MILLENNIUM CHALLENGE ACCOUNT (MCA)- MALAWI II

SPECIFIC PROCUREMENT NOTICE (SPN)

Country	Malawi
Project Name	Accelerated Growth Corridors (AGC) Project
Procurement Title	Road Construction: - Corridor (Chileka – Likuni) and - Corridor (Chamtulo -Mkutumula)
Procurement Ref. Number	M95658000010000 and M95659000010000 respectively
Budget:	Corridor (Chileka-Likuni) US\$23.9 Million Corridor (Chamtulo-Mkutumula) US\$32.3 Million
Type of Procurement	Works
Accountable Entity	Millennium Challenge Account (MCA)- Malawi II
Publication Date	18th September 2024
Submission Deadline	20th November 2024; at 3.00 PM Local Time

The United States of America and the Government of the Republic of Malawi (the "Government") signed on September 28, 2022, a Compact for an amount of US\$350 Million, for a program to advance economic growth and reduce poverty in Malawi. The Government, acting through the Millennium Challenge Account-Malawi II (MCA-Malawi II), intends to apply a portion of the proceeds to eligible payments for the construction of Chileka - Likuni and Chamtulo - Mkutumula Corridor Roads.

Any payments made under the proposed contracts will be subject, in all respects, to the terms and conditions of the Compact and related documents, including restrictions on the use and distribution of MCC Funding. The Compact and its related documents can be found at the MCC website (www.mcc.gov).

The Government has designated MCA-Malawi II to implement the Government's responsibilities under the Compact.

MCC's funding is appropriated by the U.S. Congress and obligated to the Compact up-front, with no incremental or partial funding. So when a contract is signed with MCA-Malawi II, money is already available and all invoices are paid directly to Offerors by the US Treasury.

MCA- Malawi II now invites **password protected** Offers from eligible

malawi.org/procurement/procurement-notices.php or can be directly downloaded from the following link:
<https://www.dropbox.com/sc/1to7j3www9omch4ioz6bkdbv/AEwj0-EiRU9vFr5FTtChQ?rlkey=9stest5iehe31ac3b159ezp855stfz9i5p81&dl=0>

NOTE: Please copy the link above and paste it in your browser to access the Bidding Documents

Offerors are strongly advised to register their interest, in order to receive any clarifications, notices, and/or addenda of the Bidding Document regarding this competitive process. In registration, Offerors shall provide their correct email and contact details in the registration process in the following link:

<https://zoom.us/join/zoom/register/tJisc--vrTkoEtSPzbQNmLwWXjGmTL3iy-4/registration>

Offers must be submitted electronically to the link specified in DS-ITO 21.1 (c) of the Bidding Document, no later than **3.00 PM Local Time, on 20th November, 2024.**

Technical Offers will be publicly opened on the date and time in DS-ITO

This achievement reflects our partnership with the American people, through the MCC.

Despite the complexities of starting large-scale projects like this, we are proud to be on track.

MCA MALAWI II CEO, DYE MAWINDO

NEWS UPDATES



CELEBRATING A NEW MILESTONE WITH THE SIGNING OF IMPLEMENTATION AGREEMENTS WITH KEY INSTITUTIONS

MCA Malawi II signed Implementing Entity Agreements (IEAs) which marked another significant milestone for our journey to upgrade over 300 kilometers of roads across the four corridors.

The important agreements which outline clear roles and responsibilities for each entity and a key requirement to access funds required for the planned transport activities, that will be led by the institutions.

During the signing ceremony, MCA Malawi II CEO, Dye Mawindo, highlighted the positive impact the roads could bring. “Improved roads mean lower transport costs, better access to markets, and stronger economic opportunities for smallholder farmers,” he said.

The Ministry of Transport’s Director of Roads, Kelvin Mphonda, noted that while some costs have risen since the project’s inception, such increases are typical for long-term infrastructure projects.

Roads Authority Board Chairperson Matilda Matabwa stated the importance of the Compact to assess costs and adjust plans as necessary and expressed confidence in the support from MCC, MCA Malawi II and the Government to achieve the Compact’s goals.



Attendees at the symbolic signing included the Lilongwe District Council, the Ministry of Transport and Public Works, Roads Authority Malawi, Roads Fund Administration Malawi, MCC leadership, and press representatives who covered this key milestone.

OUR PARTNERS IN FOCUS



A DIGITAL FUTURE FOR MZUZU: Modern revenue systems to boost services for residents

As digital technology drives global transformation, the rapid urban growth in Malawi emphasizes the need for city councils to enhance revenue for better resident services.

In Mzuzu, Malawi's "Green City" and a center for tourism and commerce, modernizing land management systems presents significant revenue potential.

The city is among four cities participating in the Compact's Land Project, which aims to strengthen revenue systems by modernizing property tax processes and managing city expenditures more effectively, ultimately improving service delivery.



With Robert Ziba,
Director of Finance
Mzuzu City Council

Q: What transformations do you expect from modernizing revenue systems?

A: Our current system is largely manual, so this project will digitalize our processes, allowing residents and property owners to access information and make payments online. This modernization will also increase the city council's efficiency by linking our financial systems, streamlining operations, and improving the council's transparency and accountability.

Q: How will the project encourage property owners to pay city rates?

A: Changing mindsets is key. This project will implement behavioral change activities to inform residents about the importance of city rates and their role in supporting city services, helping them understand the direct benefits of contributing to improved service delivery.

Q: How does this project align with the city's own development priorities?

A: The project aligns with the city's development priorities by aiming to attract investors for Mzuzu's economic growth. It fosters collaboration between the council and residents, building trust to encourage investment. Additionally, the project improves services like waste management, street lighting, drainage, and sanitation, enhancing the council's ability to serve residents effectively.

Q: How is the Compact's approach different from other projects?

A: MCC's approach is comprehensive, addressing multiple aspects of our systems. The extensive studies conducted before designing the activities and the full engagement of all stakeholders from development to implementation, also make this project unique.

STORY BRIEFS



GOVERNANCE AND OVERSIGHT FOR THE COMPACT'S EFFECTIVE IMPLEMENTATION

Since its constitution in 2022, our Board of Trustees has continued to play a crucial role in overseeing the governance and operational direction of the Compact.

The 10-member board, comprising of representatives from both governmental and non-governmental sectors, brings together diverse expertise to ensure the Compact's success.

Chaired by Ms. Linda Mzumara Phiri, a seasoned finance and executive leader with over 15 years of experience, the board is well-equipped to steer MCA Malawi II toward its mission and goal.

Through her leadership, the board has conveyed high expectations for the Compact's implementation, aiming for transformative results in Malawi's transport and land sectors.



MEET THE BOARD CHAIRPERSON

Ms. Linda Mzumara Phiri

Ms. Linda Mzumara Phiri brings a wealth of experience to her role as Board Chairperson for MCA Malawi II.

Drawing from over 15 years of directorship and advisory experience, Ms. Phiri has served on various boards and subcommittees.

Ms. Phiri is currently serving as the Director of Finance and Investments for the Greenbelt Authority.

HIGHLIGHTS FROM OUR STORIES & EVENTS



STRENGTHENING OUR ANTI-CORRUPTION EFFORTS

MCA Malawi II staff completed an essential Anti-fraud and Corruption Training, that was facilitated by MCC.

This training equips our team to detect, prevent, and report corruption as we implement the Transport and Land Compact.

In her remarks, the U.S. Embassy Chargé d’Affaires, Amy Diaz, highlighted the importance of protecting the U.S. taxpayer-funded resources, ensuring they fully benefit the people of Malawi.



STORIES FROM THE FIELD

Highlighting Phillipina Mzumara, a retired teacher and member of a women’s farming cooperative in Euthini. She is optimistic about the road that is soon to be constructed and all the new opportunities for local farmers in the area.

[Click here to read her story on our Sway page](#)

PICTORIAL HIGHLIGHTS

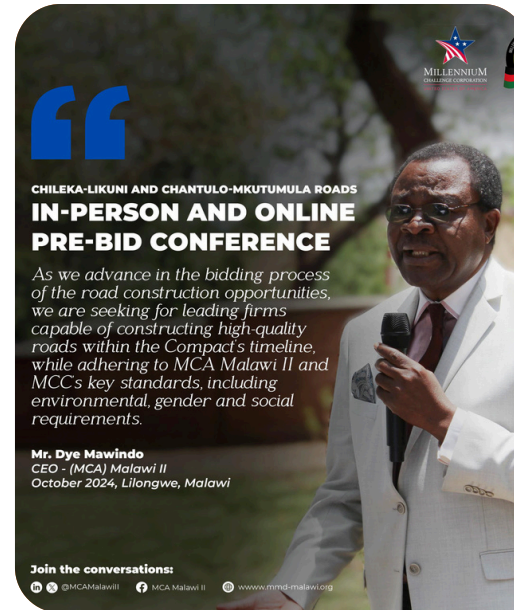
ENSURING COMPLIANCE AND HIGH STANDARDS IN OUR ROAD WORKS PROCUREMENT

Our Pre-bidding Conference, both in-person and online, allows potential bidders the necessary information for their bidding processes.

By ensuring clear, fair, and competitive processes, we are helping set the stage for successful road and construction projects.



McDonald Banda, Project Director for the Transport Project presenting on key issues to the potential bidders for the road upgrade work.



MCC'S GENDER & INCLUSION POLICY

YOU CAN READ THE POLICY HERE FIRST!

MILLENNIUM CHALLENGE CORPORATION UNITED STATES OF AMERICA

MCC launched a new Gender and Inclusion Policy aimed at providing opportunities for disadvantaged groups, minimizing social risks, and enhancing economic security.

This policy fosters shared responsibility with partner countries like Malawi to address inequalities, emphasizing inclusive community engagement through gender-sensitive measures to ensure equitable benefits for all.

Read it here
www.mcc.gov/resources/doc/gender-and-inclusion-policy/

PICTORIAL HIGHLIGHTS



PUBLIC DISCLOSURE MEETING

Environmental and Social Performance Manager, Edith Mayesa during a recent Public Disclosure meeting on the Compact's environmental, social and resettlement issues with District Council officials, held in the districts under the first corridors to be constructed.

These meetings are essential for our stakeholder engagement, promoting understanding, public trust, and transparency in our processes.

ROAD SAFETY TRAINING



Participants and officials from a five-day International Road Assessment Programme (iRAP) capacity-building initiative focused on road safety using iRAP methodologies and tools.

The training brought together representatives from the Ministry of Transport and Public Works (MTPW), the Directorate of Road Traffic & Safety Services (DRTSS), the Roads Authority, MCA Malawi II, MCC, the local NGO Road Safety Alert Foundation (ROSAF), and project partners engaged in road planning, design, development, operation, and maintenance.

PICTORIAL HIGHLIGHTS



MEDIA ENGAGEMENT

In partnership with the Malawi Broadcasting Corporation, we conducted a media documentation exercise to create engaging stories for various platforms.

This is part of the Compact's communications strategy to enhance public awareness and engage stakeholders.

Collaborating with the media will help us raise awareness, gather public feedback, increase brand visibility, and assist media professionals in covering land and transport topics effectively.

MCC-MCA MALAWI II CONTENT COLLECTION MISSION



MCA Malawi II partnered with MCC's Department of Public Affairs, led by Jessica Glickman, to collect content showcasing progress and visibility of compact initiatives in Malawi.

The team focused on human interest stories related to the Transport and Land projects in the northern region, capturing the "before" context to construct a comprehensive narrative of the compact's journey and its eventual impact.



Since 2004 MCC has been a steadfast friend of Malawi in our journey toward inclusive economic advancement. In fact, Malawi was one of the first beneficiaries and we are grateful for the continued impact.

- PRESIDENT LAZARUS CHAKWERA
MALAWI



PICTORIAL HIGHLIGHTS



Cakes, certificates, and going live! Celebrating the training and Going Live of our SAP Information Management System; a key step towards enhancing efficiency and data management in our operational processes.



ONE MISSION, ONE TEAM

Captured here after a successful symbolic celebration of the Compact's Launch in May.



To learn more, get involved, and stay informed about MCA Malawi II's initiatives, visit our website and social media platforms.

STAFF FOCUS

WORKING WITH INTEGRITY AND EXCELLENCE

Misheck Galileya is a Procurement Specialist who joined the team in March 2024 and recently received a trophy award, highlighting his commitment to advancing the Compact's mission.



The most rewarding aspect of my work is the opportunity for innovation and learning during the early stages of the Compact, which presents daily challenges and inspires contributions.

I am especially proud of our progress in the Land Project for completing major procurements within months. For the Transport Project, finalizing Package 2 is another key milestone.

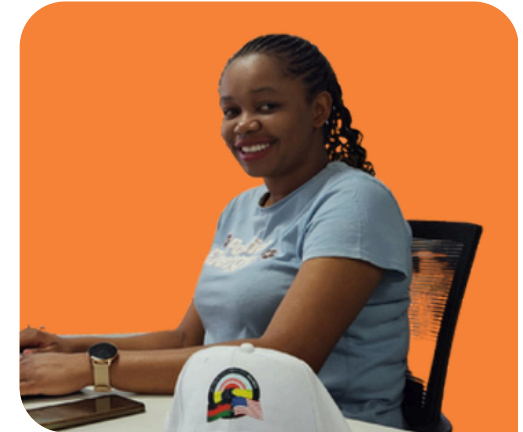
My advice for the youth interested in development work is that Malawi is our shared responsibility. It is great to think globally, but we need dedicated people focused on uplifting our country. So let us invest our energy here.

In my free time, I love reading, playing guitar, and riding my motorcycle or bike. I am also into movies, traveling, swimming, and an occasional game of squash!

CELEBRATING YOUTH AND WOMEN INCLUSION IN OUR WORKFORCE

Our commitment to youth inclusion goes beyond the implementation of activities and is also reflected in our work force.

Meet Aisha Balakasi, a 28-year-old trailblazer and part of our dynamic team of engineers, working to ensure top standards in our road construction projects.



I love my profession as a civil engineer because it is challenging yet rewarding, providing growth opportunities.

I enjoy seeing projects transform from designs to completed structures and thrive on problem-solving.

I love working for MCA Malawi II because it goes beyond construction to address gender and social inclusion, environmental management, and economic impact. The focus on long-term sustainability ensures our projects benefit the community.

To the Malawian youth, especially girls: Be bold in pursuing your dreams, particularly in engineering. Though it may seem daunting, everyone brings a unique perspective. Stay curious, keep learning, and know your contributions matter.



GET IN TOUCH WITH US

Millennium Challenge Account
(MCA) Malawi II
Attention: Chief Executive Officer
Sparc Tower
Plot Number 13/133
P.O. Box 51513
City Centre,
Lilongwe,
Malawi.



